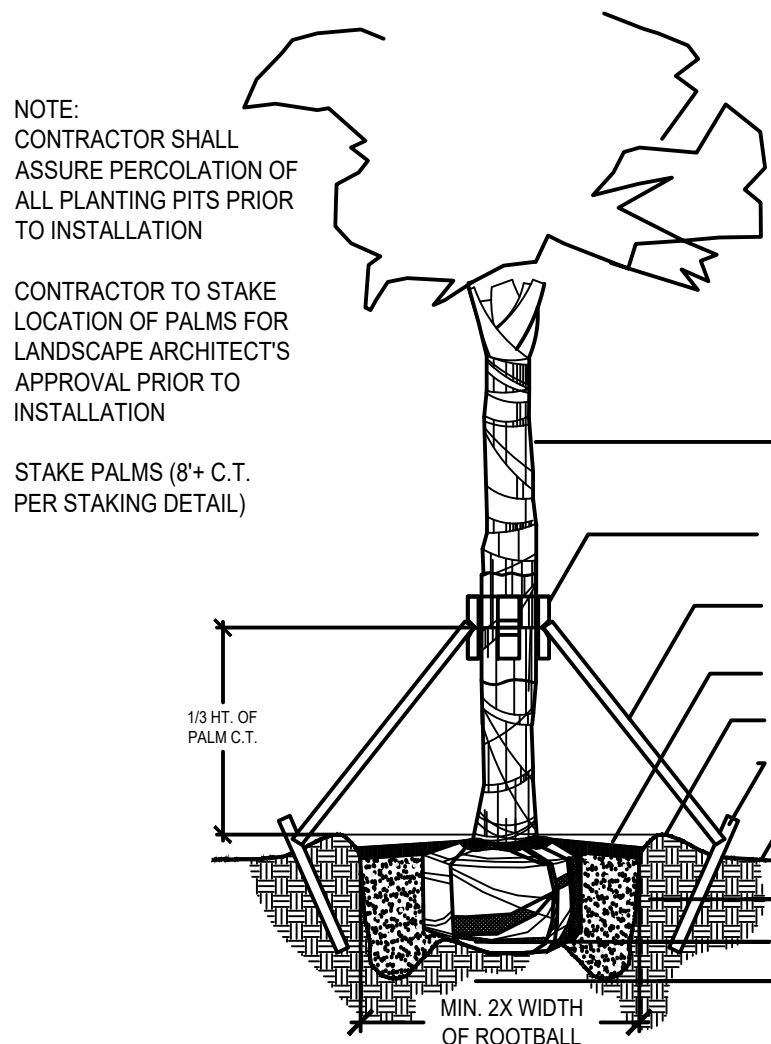
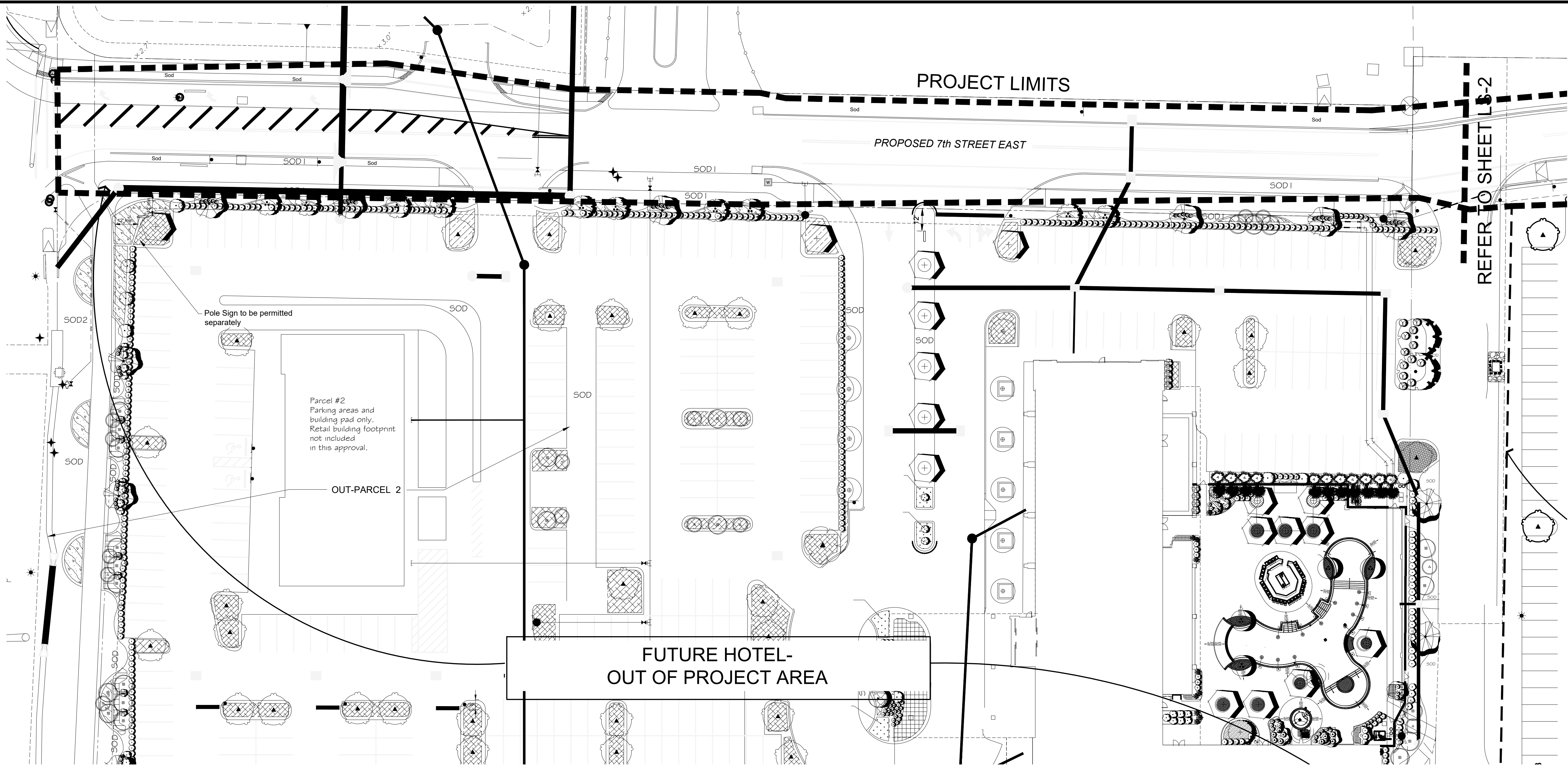


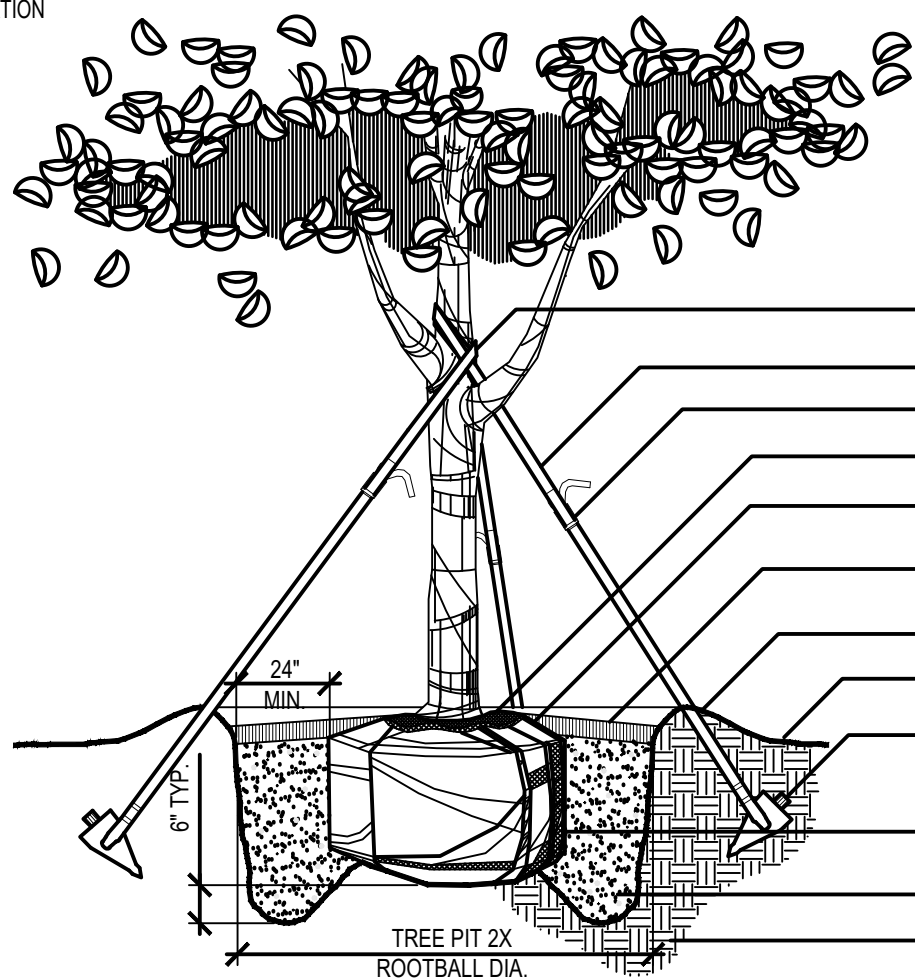
8/16/2021 2:03:32 PM BOB GAUSE F:\BOS\18-1104-Convention Center Hotel\ACAD\7thStreet\Standard\LA-CCH-7thStreet-LA.dwg



Sabal Palm Planting
Scale: N.T.S.

- NOTE:**
CONTRACTOR SHALL ASSURE PERCOLATION OF ALL PLANTING PITS PRIOR TO INSTALLATION
- NOTE:**
CONTRACTOR TO STAKE LOCATION OF PALMS FOR LANDSCAPE ARCHITECT'S APPROVAL PRIOR TO INSTALLATION
- STAKE PALMS (8" C.T. PER STAKING DETAIL)**
- TRUNKS SHALL BE STRAIGHT W/ UNIFORM TAPER W/O CURVES; FREE OF SCARS, BURNS, GOUGES, BOOTS, ETC.**
- PRE-ASSEMBLED PALM SAVER COLLAR BY STAKING SYSTEMS INC., OR APPROVED EQUAL**
- TOE NAIL (3) 2"x4" P.T. WOOD BRACE TO BATTENS DO NOT NAIL INTO TRUNK OF PALM**
- 3" MULCH LAYER; SEE PLANT LIST FOR TYPE**
- 6" SOIL BERM TO HOLD WATER**
- (3) 2"x4"x3" WOOD STAKES**
- FINISH GRADE**
- 2"x4"x3" WOOD STAKES**
- PREPARE PLANTING SOIL AS SPEC'D**
- UNDISTURBED SOIL**

NOTE:
CONTRACTOR SHALL ASSURE PERCOLATION OF ALL PLANTING PITS PRIOR TO INSTALLATION

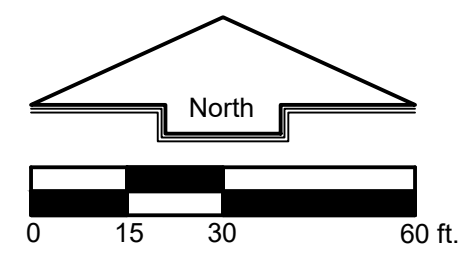


Tree Planting (65-100 Gal.)
Scale: N.T.S.

- STAKING PLAN (65-100 Gal. Trees)**
- NOTE:**
ARBOR TIE STAKING COMPONENTS AS MANUF. BY STAKING SYSTEMS INC. OR APPROVED EQUAL
- STAKING PLAN (>100 Gal. Trees)**
- WRAP NYLON STRAPPING AT FIRST BRANCHES. MIN. 4'-6" FROM GROUND**
- 1 1/2" MIN. NYLON STRAPPING**
- HAND TENSION BUCKLE**
- NO MULCH NEAR TRUNK**
- SET TOP OF ROOT BALL 2" ABOVE FIN. GR.**
- 3" LAYER OF MULCH; SEE PLANT LIST FOR TYPE**
- 6" SOIL BERM TO HOLD WATER**
- FINISH GRADE**
- ARROWHEAD ANCHOR**
- 8-8B OR CONTAINERIZED ROOTBALL SEE SPECS FOR ROOTBALL REQMT**
- PREPARE PLANTING SOIL AS SPEC'D**
- UNDISTURBED SOIL**

LANDSCAPE NOTES:

- In the event of variation between quantities shown of the plant list and the plans, the plans shall control. Improvisations made by the Landscape Contractor shall be no cause for additional costs to the owner. Sod, mulch, and topsoil quantity takeoffs shall be the responsibility of the contractor.
- No substitutions shall be made without the written consent of the Owner or Landscape Architect.
- Fertilizer shall be applied to all new planting areas at a rate of 1 1/4 lbs. actual nitrogen, 1 1/4 lbs. actual phosphorus, and 1 1/4 lbs. actual potash per 1,000 sq. ft. of planting area. The fertilizer shall also contain all minor trace elements suitable for the area where it is to be used.
- All shrub bed soil mixtures shall contain 2/3 best of on-site topsoil and 1/3 peat, with 8 oz. of super-absorbent mixed in with each cubic yard. Shrub beds shall be uniformly amended to a depth of 12". Ph levels within planting beds shall be between 6.5 and 7.5 following plant installation. It shall be the Landscape Contractor's responsibility to achieve the proper pH level.
- Topsoil material, when called for on the plans, shall be free of sticks, stones larger than 1" dia., plants, or any other debris which would be toxic or otherwise harmful to plant growth. Topsoil should be fertile, friable, and of a naturally loamy character.
- The Landscape Contractor shall take all necessary precautions to protect all existing structures on the site and shall be held responsible for any damage caused by his operations.
- It shall be the Landscape Contractor's financial responsibility to prevent plants and trees from falling or being blown over, and to replace all plants which are damaged at no additional cost to the owner for sustained winds of less than 65 MPH.
- Maintenance shall begin after each plant has been installed and shall continue until final acceptance by the Landscape Architect. Maintenance shall include pruning, mulching, weeding, replacement of sick or dead plants, watering (including cost of equipment such as a water-truck) and any other care which is needed for the proper growth of the plant material.
- Excess waste material shall be removed daily from the site.
- All plant materials used shall conform to the standards for Florida No. 1 or better as described in "Grades and Standards for Nursery Plants", State of Florida, Department of Agriculture and Consumer Services, Division of Plant Industry, 2015 edition or equal thereto as approved by the Landscape Architect.
- All shrub beds and hedges shall be top-dressed with 3" of Coco Brown Mulch unless otherwise stated on the plans or plant schedule. Mulch shall be pulled back 4" from tree trunks and reduced to one inch depth next to woody shrubs.
- It shall be the responsibility of the Landscape Contractor to coordinate activities with other contractors on the job site.
- All plant materials shall be fully guaranteed for a period of one (1) year following final acceptance by the owner.
- Planting beds for hedges shall be 3' wide unless otherwise specified.
- Unit prices for all plant material shall be provided to the Landscape Architect or Owner upon request.
- The Landscape contractor shall not include sod for retention areas into bid (ie. Lake banks and dry retention ponds). This work shall be the responsibility of the general contractor. Sodding of swales shall be the landscape contractors responsibility. Landscape contractor shall use Bahia sod for all other areas unless otherwise specified on the plans.
- Contractor shall install an automatic irrigation system which provides 100% coverage of all landscaped areas, including the tree/shrub buffer as shown on plan. Lowest quality water source shall be used. Potable water shall not be used.
- All B & B or Field Grown material (except palms) shall be obtained from "Roots Plus" certified nurseries.
- All trimming of existing trees shall be conducted or overseen by a certified arborist. Contractor shall contact sunshine state one call of florida system at 811
- 1-800-432-4770 for the location of underground utilities/facilities. Contractor shall verify the exact locations of said facilities prior to excavation and shall assume any and all liability for damages which may occur due to the contractor's failure to locate and preserve said facilities.
- Trees shall not be planted or located within 10 feet of any potable water main, reclaimed water main, sanitary force main, gravity sanitary sewer main, sanitary cleanouts, or potable/reclaimed / force main appurtenances such as meters, hydrants, backflow prevention assemblies, etc. that are owned and maintained by Manatee County. An approved root barrier shall be used where trees are planted closer than 10'.
- Roadway buffers are not located in potential Right of Way reservation setbacks.
- Trees and shrubs shall not be placed within the middle two thirds of any drainage swale or within 3' measured horizontally from the centerline of the swale, whichever is greater.



Always call 811 two full business days before you dig to have underground utilities located and marked.

Sunshine811.com

DESIGNED: RG/AB
DATE: Aug. 2019
DRAWN: RG/AB
JOB NO.: 18-1104
SCALE: 1" = 40'

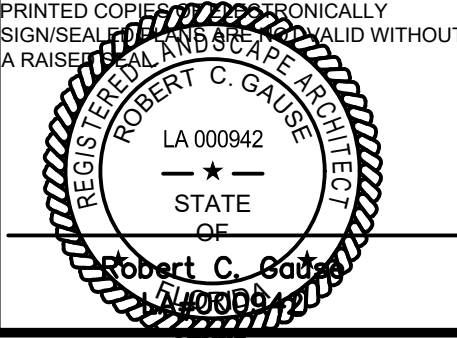
REVISIONS:	
1	
2	
3	
4	
5	
6	
7	

Sheraton Palmetto at Bradenton Area Convention Center

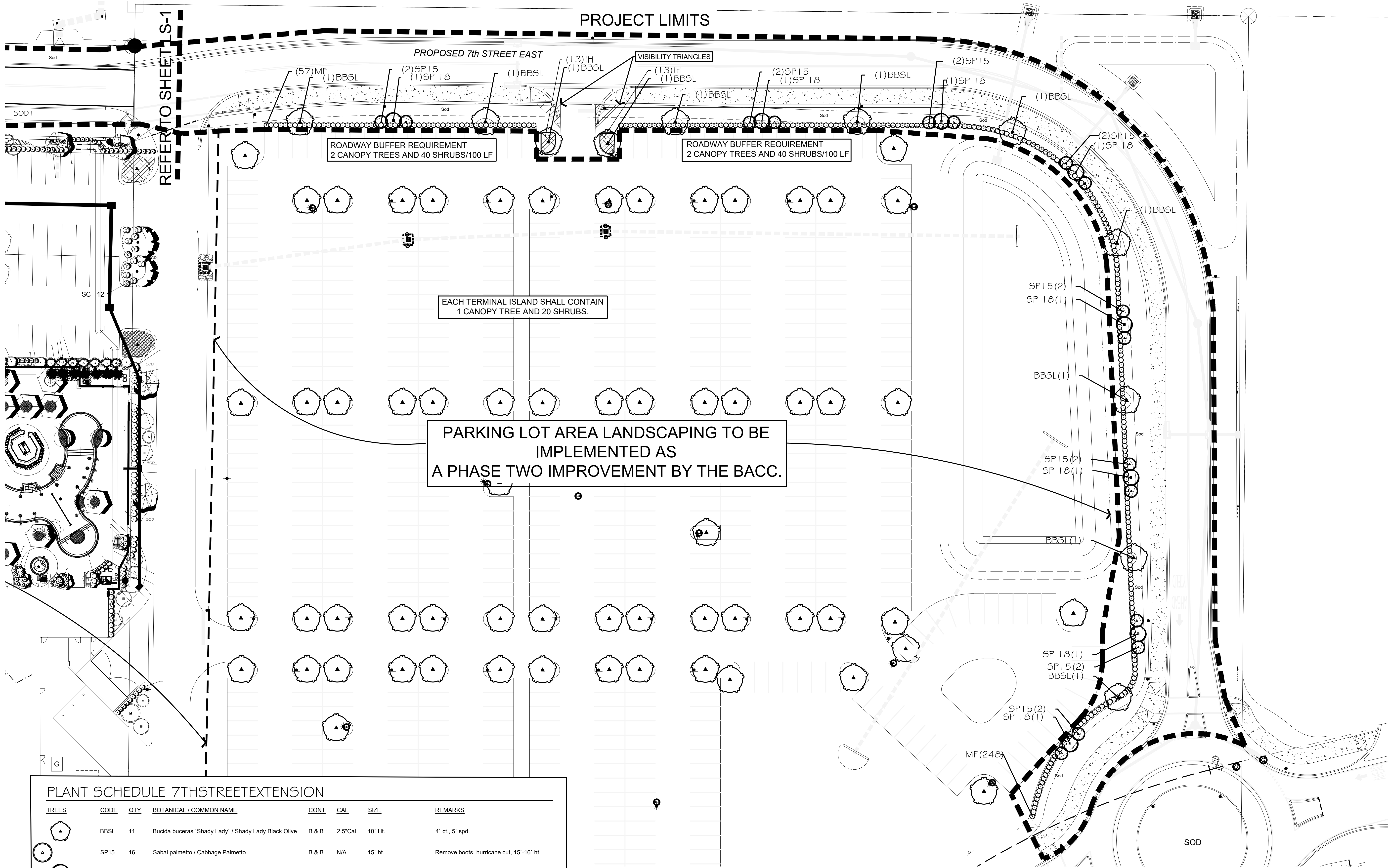
LOCATED AT:
600 US Hwy. 41, North
Palmetto, FL 34221
SECTION 13/24
TOWNSHIP 34 SOUTH
RANGE 17 EAST
MANATEE COUNTY, FLORIDA

LANDSCAPE PLAN

LS.1



PROJECT LIMITS




EACH TERMINAL ISLAND SHALL CONTAIN
1 CANOPY TREE AND 20 SHRUBS.

PARKING LOT AREA LANDSCAPING TO BE
IMPLEMENTED AS
A PHASE TWO IMPROVEMENT BY THE BACC.

ROADWAY BUFFER REQUIREMENT
2 CANOPY TREES AND 40 SHRUBS/100 LF

ROADWAY BUFFER REQUIREMENT
2 CANOPY TREES AND 40 SHRUBS/100 LF

PLANT SCHEDULE 7TH STREET EXTENSION

TREES	CODE	QTY	BOTANICAL / COMMON NAME	CONT	CAL	SIZE	REMARKS
	BBSL	11	Bucida buceras 'Shady Lady' / Shady Lady Black Olive	B & B	2.5" Cal	10' Ht.	4" ct., 5" spd.
	SP15	16	Sabal palmetto / Cabbage Palmetto	B & B	N/A	15' ht.	Remove boots, hurricane cut, 15'-16' ht.
	SP 18	8	Sabal palmetto / Cabbage Palmetto	B & B	N/A	18' Ht.	Remove boots, hurricane cut
SHRUBS	CODE	QTY	BOTANICAL / COMMON NAME	CONT			
	MF	305	Myrcianthes fragrans / Simpson Stopper	3 gal			
	IH	26	Rhaphiolepis indica nana / Dwarf Indian Hawthorn	3 gal	36" o.c.	12" ht., 12" spd.	



Gause Associates
Landscape Architecture | Land Planning | Environmental Consulting | Artist | Permitting | Project Management | Irrigation Design

323 Tenth Avenue West, Suite 102
Palmetto, Florida 34221
Ph. 941.981.3089 | Cell. 941.713.0782
email: bob@gauseandassociates.com
LC26000572 | ISA# FL5334A | AICP #061988

DESIGNED: RG/AB
DATE: Aug. 2019
DRAWN: RG/AB
JOB NO.: 18-1104
SCALE: 1" = 40'

REVISIONS:

1	
2	
3	
4	
5	
6	
7	

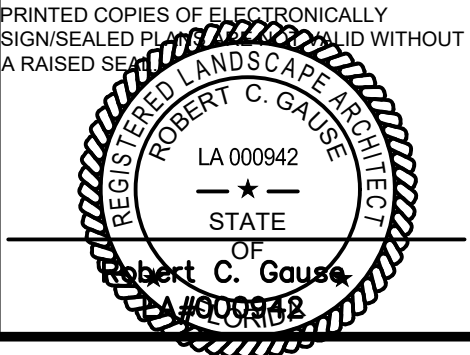
Sheraton Palmetto
at Bradenton Area Convention Center

LOCATED AT:
600 US Hwy. 41, North
Palmetto, FL 34221
SECTION 13/24
TOWNSHIP 34 SOUTH
RANGE 17 EAST
MANATEE COUNTY, FLORIDA

LANDSCAPE
PLAN

LS.2

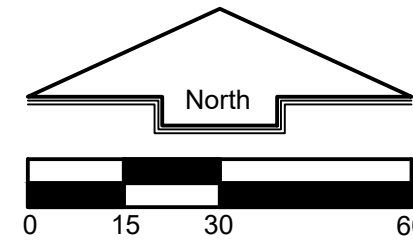
PRINTED COPIES OF ELECTRONICALLY
SIGNED/SEALED PLANS SHALL BE WITHOUT
A RAISED SEAL

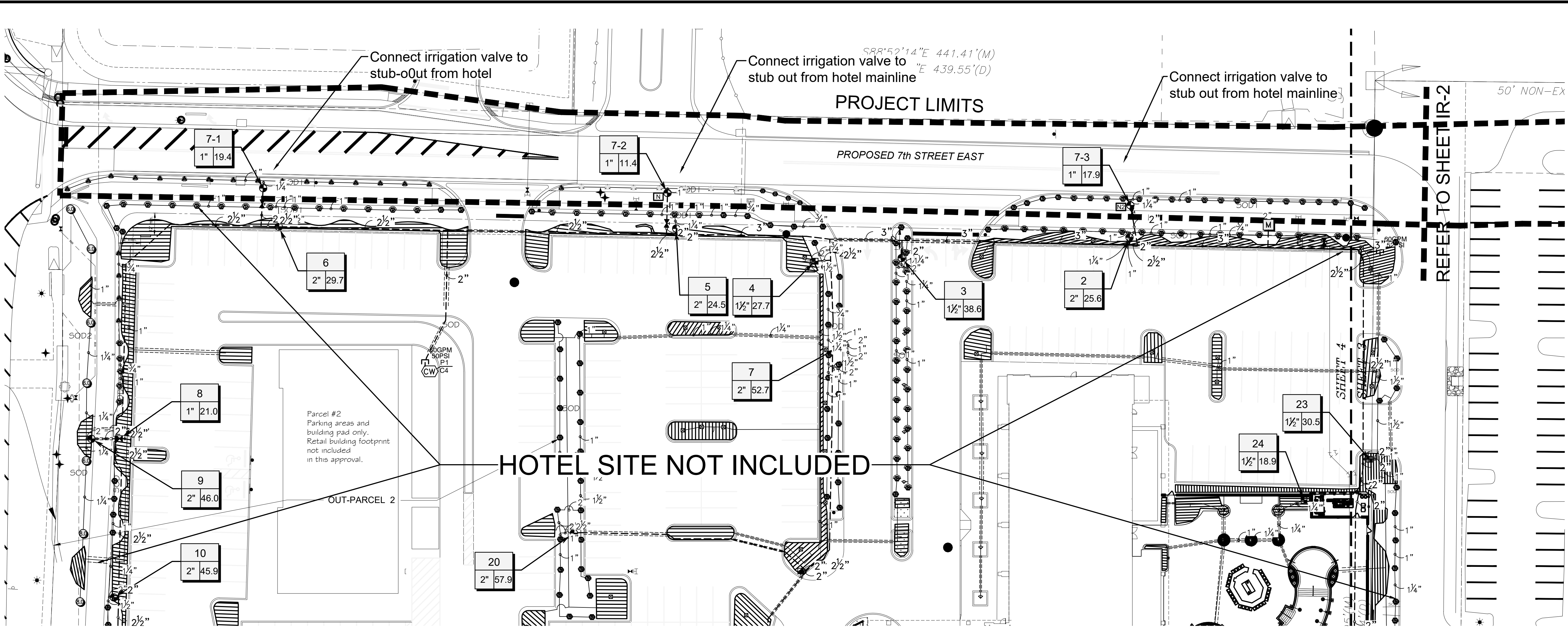


REGISTERED LANDSCAPE ARCHITECT
LA 000942
STATE OF FLORIDA
Robert C. Gause
12/1/2018

Always call 811 two full business days before you dig to
have underground utilities located and marked.

Sunshine811.com

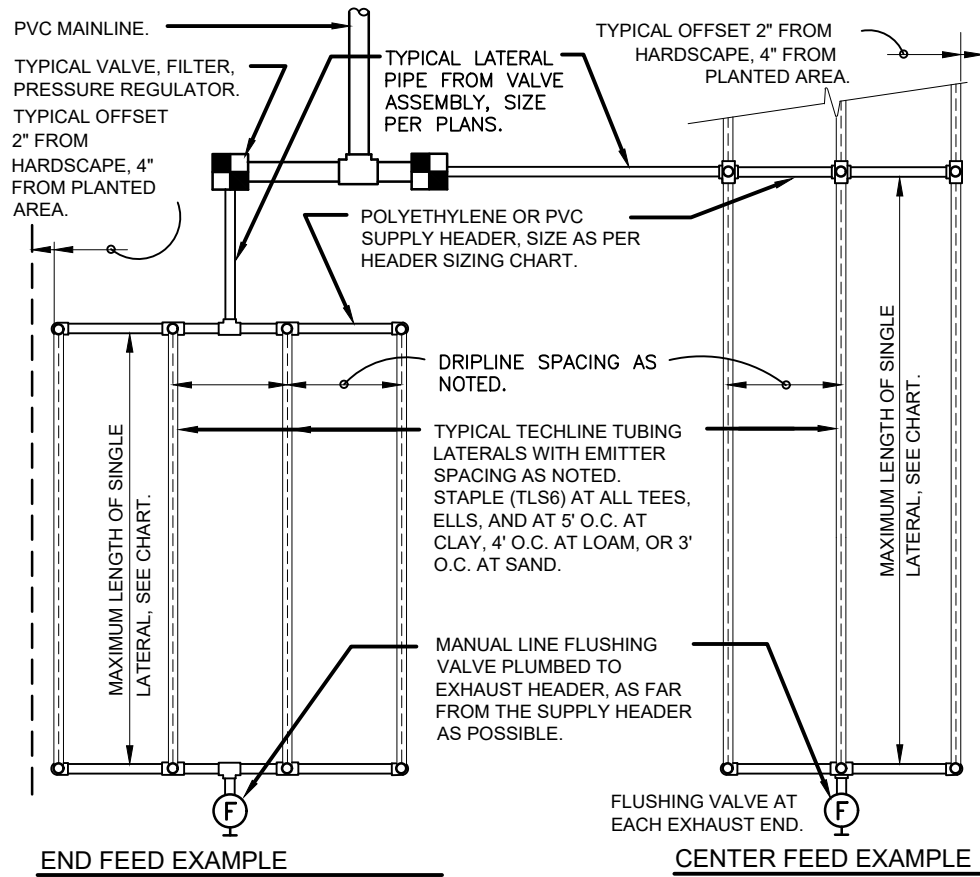




IRRIGATION SCHEDULE 7TH ST.E. EXTENSION WESTERN PORTION

SYMBOL	MANUFACTURER/MODEL/DESCRIPTION	QTY	PSI
	Rain Bird 1806-NP 15 Strip Series Turf Spray 6.0" Pop-Up Sprinkler with Co-Molded Wiper Seal. Side and Bottom Inlet. 1/2" NPT Female Threaded Inlet. With Non Potable Purple Cap.	17	30
	Rain Bird 1806-NP 10 Series MPR Turf Spray 6.0" Pop-Up Sprinkler with Co-Molded Wiper Seal. Side and Bottom Inlet. 1/2" NPT Female Threaded Inlet. With Non Potable Purple Cap.	17	30
	Rain Bird 1806-NP ADJ Turf Spray 6.0" Pop-Up Sprinkler with Co-Molded Wiper Seal. Side and Bottom Inlet. 1/2" NPT Female Threaded Inlet. With Non Potable Purple Cap.	10	30

SYMBOL	MANUFACTURER/MODEL/DESCRIPTION	QTY
	Hunter ICV-G-FS-R 1", 1-1/2", 2", and 3" Plastic Electric Remote Control Valves. Globe Configuration, with NPT Threaded Inlet/Outlet, for Commercial/Municipal Use. With Filter Sanitary Factory Installed Option, and Reclaimed Water ID, Purple Handle.	3
	Shut Off Valve 3" Bronze Shut off valve for future connection to effluent mainline	1
	Hunter NODE-BT-100-VALVE 1-Station Bluetooth Controller, Outdoor, Battery Powered with PGV-101G Valve and DC Latching Solenoid	1
	Hunter NODE-BT-100-VALVE 1-Station Bluetooth Controller, Outdoor, Battery Powered with PGV-101G Valve and DC Latching Solenoid	1
	Point of Connection 2" Connect to new reclaim connection by lift station	1
	Irrigation Lateral Line: PVC Class 160 SDR 26 Pipe size 4" and above shall be gasketed pipe Valve Callout	546.9 l.f.
	Irrigation Mainline: PVC Class 200 SDR 21 Pipe size 4" and above shall be gasketed pipe Valve Callout	51.3 l.f.
	Valve Number	
	Valve Flow	
	Valve Size	



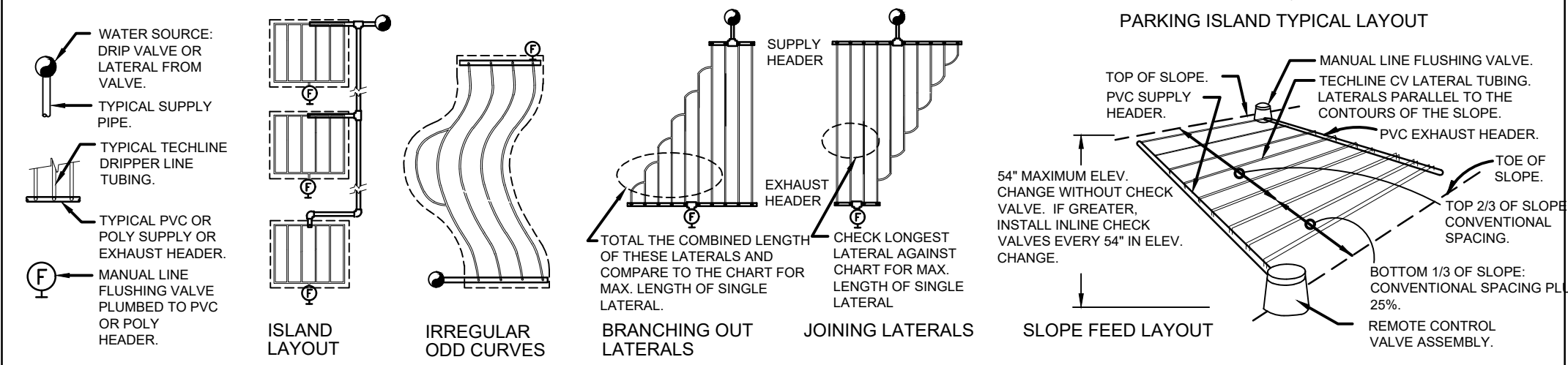
5 TYPICAL NETAFIM TECHLINE CV REQUIREMENTS
N.T.S.

TECHLINE CV MAXIMUM LENGTH OF SINGLE LATERAL (FEET)												
DRIPPER SPACING		12"			18"			24"				
DRIPPER FLOW RATE (GPH)		0.26	0.4	0.6	0.9	0.26	0.4	0.6	0.9	0.6	0.9	
INLET PRESSURE (PSI)	15	127	109	86	65	177	151	120	91	152	116	
	25	427	325	256	194	604	459	361	274	458	348	
	35	539	409	322	244	763	579	456	346	580	440	
	45	618	469	369	280	877	664	523	397	666	506	

TECHLINE FLOW PER 100 FEET							
DRIPPER SPACING		0.26 GPH DRIPPER	0.4 GPH DRIPPER	0.6 GPH DRIPPER	0.9 GPH DRIPPER		
12"	GPH	4.44	40.00	0.67	61.00	1.02	92.00
18"	GPH	17.58	0.29	26.67	0.44	41.00	0.68
24"	GPH	N/A	N/A	N/A	N/A	31.00	0.51

SUPPLY AND EXHAUST HEADER SIZING CHART (UNLESS NOTED ON PLANS)							
STEP 1: ADD LENGTH OF ALL TECHLINE LATERAL TUBING CONNECTED TO THE HEADER. STEP 2: DIVIDE THIS TOTAL LENGTH BY 100 TO INDICATE THE LENGTH IN UNITS OF 100. STEP 3: LOCATE THE GPM THAT APPLIES FOR EACH UNIT OF 100 FEET LENGTH ON THE CHART. "TECHLINE FLOW PER 100 FEET". MULTIPLY THIS GPM NUMBER TIMES THE UNITS OF 100 FEET FOR THE TOTAL GPM AT THIS HEADER. STEP 4: SIZE THE HEADER WITH THE FOLLOWING:							
1 TO 6 GPM:		6 TO 10 GPM:		10 TO 20 GPM:		20 TO 30 GPM:	
3/4" HEADER		1" HEADER		1 1/4" HEADER		1 1/2" HEADER	

TECHLINE CV GENERAL GUIDELINES FOR WATERING TIME									
		TURF			SHRUB & GROUND COVER				
		CLAY	LOAM	SANDY	CLAY	LOAM	SANDY		
DIPPER FLOW (GPH)		0.26	0.4	0.6	0.26	0.4	0.6		
DIPPER INTERVAL		18"	12"	12"	18"	18"	12"		
LATERAL (ROW) SPACING		18"-22"	18"-22"	12"-16"	18"-24"	18"-24"	16"-20"		
APPLICATION RATE (IN/HR)		.19-.0.15	.43-.35	.96-.72	.19-.21	.29-.21	.72-.58		
TIME TO APPLY 1/4"		79-100	35-43	16-21	79-107	52-71	21-26		



Gause Associates
Landscape Architecture | Land Planning | Environmental Consulting | Artist | Permitting | Project Management | Irrigation Design
323 Tenth Avenue West, Suite 102
Palmetto, Florida 34221
Ph. 941.981.3089 | Cell. 941.713.0782
email: bob@gauseandassociates.com
LC26000572 | ISA# FL5334A | AICP #061988

DESIGNED:	RG/AB
DATE:	Aug. 2019
DRAWN:	RG/AB
JOB NO.:	18-1104
SCALE:	1" = 40'

REVISIONS:	
1	
2	
3	
4	
5	
6	
7	

**Sheraton Palmetto
at Bradenton Area Convention Center**

LOCATED AT:
600 US Hwy. 41, North
Palmetto, FL 34221
SECTION 13/24
TOWNSHIP 34 SOUTH
RANGE 17 EAST
MANATEE COUNTY, FLORIDA

IRRIGATION PLAN

IR.1

PRINTED COPY IS NOT VALID. SIGN/SEAL AND WITHOUT A RAISED SEAL.

REGISTERED LANDSCAPE ARCHITECT
LA 000942
STATE OF
FLORIDA
BOB C. GAUSE

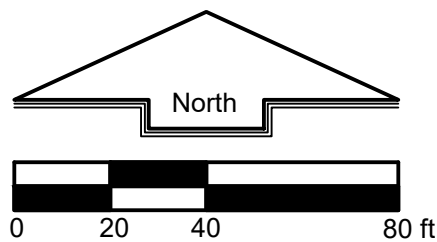
8/19/2021 8:15:20 PM BOB GAUSE F:\BOS\18-1104-Convention Center Hotel\ACAD\7thStreetExtension\GL-CCH-7thStExtension-IR-1.dwg

FX-IR-NETA-DRIP-82

8/19/2021 2:56:17 PM BOB GAUSE F:\BOS\18-1104-Convention Center Hotel\ACAD\7thStreetExtension\GL-CCH-7thStreetExtension-IR.dwg

Always call 811 two full business days before you dig to have underground utilities located and marked.

Sunshine811.com



IRRIGATION SCHEDULE 7TH ST.E.-EASTERN EXTENSION

SYMBOL	MANUFACTURER/MODEL/DESCRIPTION	QTY	PSI
	Rain Bird 1806-NP ADJ Turf Spray 6.0" Pop-Up Sprinkler with Co-Molded Wiper Seal Side and Bottom Inlet. 1/2" NPT Female Threaded Inlet. With Non Potable Purple Cap.	82	30

	Hunter AFB Adjustable Flow Bubbler, 1/2" FIPT, stainless steel screw adjustment.	14	15
--	--	----	----

SYMBOL	MANUFACTURER/MODEL/DESCRIPTION	QTY
	Hunter IGV-G-FS-R 1", 1-1/2", 2", and 3" Plastic Electric Remote Control Valves, Globe Configuration, with NPT Threaded Inlet/Outlet, for Commercial/Municipal Use. With Filter Sentry Factory Installed Option, and Reclaimed Water ID, Purple Handle.	3

	Hunter NODE-BT-100-VALVE 1-Station Bluetooth Controller, Outdoor, Battery Powered with PGV-101G Valve and DC Latching Solenoid	1
--	--	---

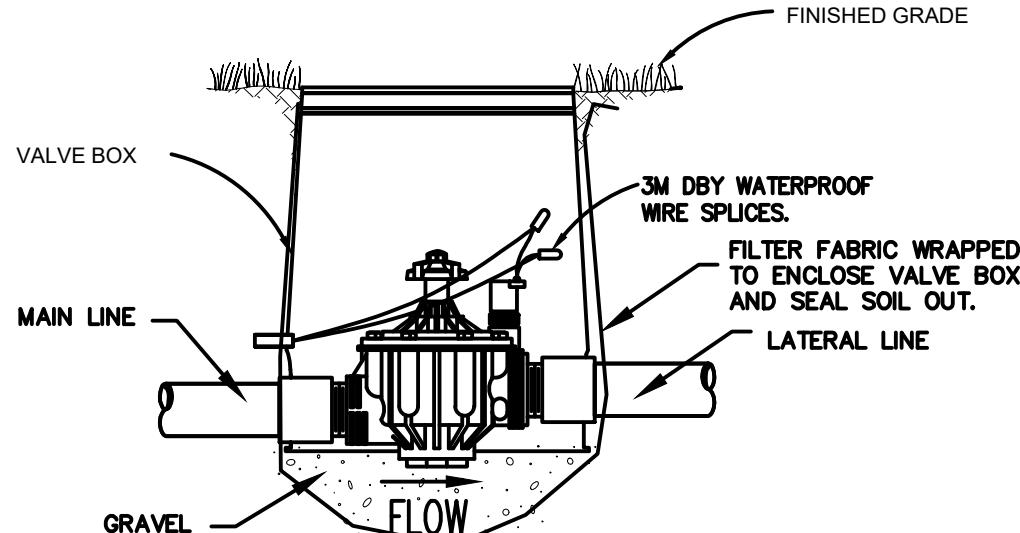
	Hunter NODE-BT-200 2-Station Bluetooth Controller, Outdoor, Battery Powered.	1
--	--	---

	Point of Connection 2" Connect to new reclaim connection by lift station	1
--	--	---

	Irrigation Lateral Line: PVC Class 160 SDR 26	2,183 l.f.
	Irrigation Mainline: PVC Class 200 SDR 21 Pipe size 4" and above shall be gasketed pipe	591.3 l.f.

	Pipe Sleeve: PVC Schedule 40 Pipe Sleeve shall be extended 18" beyond curbing and two pipe sizes larger than specified irrigation pipe. Add a 1" sleeve to allow control wiring next to each pipe sleeve.	70.9 l.f.
--	---	-----------

	Valve Callout	
	Valve Number	
	Valve Flow	
	Valve Size	



ELECTRIC VALVES

N.T.S.

IRRIGATION SPECIFICATIONS

- CONDITIONS:**
 - The Contractor shall be responsible for adjusting head location, type, size and any other system components to comply with the requirements of landscaping as actually installed. Such adjustments shall be made at no cost to the Owner except for, when authorized in writing, such adjustments will be compensated at unit prices indicated in the proposal.
 - The Contractor shall be responsible for constructing the system in complete accordance with all local codes, ordinances, and laws. Any modifications made to conform with said codes, laws, and ordinances shall be completed at the Contractor's expense with no additional compensation allowed.
- SAFETY PROVISIONS:**
 - It shall be the responsibility of the Contractor to protect all persons from injury and to avoid property damage. Adequate warning devices shall be placed and maintained during the progress of the work. It shall be the Contractor's responsibility to conform to all local, state, and federal safety laws and codes including the Federal Occupational Safety and Health Act (O.S.H.A.).
- EXISTING UTILITIES:**
 - Temporary support, adequate protection and maintenance of all underground and surface utilities, structures, drains, sewers and other obstructions encountered in the progress of the work shall be furnished by the Contractor solely at his expense.
 - Where the grade or alignment of the pipe is obstructed by existing utility structures such as conduit, ducts, pipe branch connections to sewer mains, main drains, water services, etc., the obstruction shall be permanently supported, relocated, removed, or reconstructed by the Contractor in cooperation with the Owner of such utility. No deviation from the required line or grade shall be made without the written direction of the Landscape Architect.
 - Thrust blocking shall be installed for all pipe line fittings, bends and valves installed with compression "Ring-Tite" joints. The minimum thrust block area shall be one (1) square foot in the thrust-absorbing direction, with the minimum total volume of blocking to be one (1) cubic foot of 2,000 p.s.i. concrete. Thrust blocking shall also be utilized for all main line bends or other bends or fittings where prudent.
- PIPE INSTALLATION:**
 - In all cases, the installation of the irrigation system piping shall strictly conform to the manufacturer's recommendations.
 - Excavation shall be unclassified and shall include all materials whatsoever encountered in the excavation of trenches for pipe installation. The trench shall be of sufficient width and depth for installation of the pipe as indicated herein. The Contractor shall cause minimum disturbance to all existing conditions wherever possible; the Contractor shall bore under existing pavement and sidewalks rather than cut and restore. No pavement shall be cut without the Owner's written permission.
 - Pipe shall be delivered and stored on the jobsite with suitable protection against any damage to pipe and fittings.
 - The pipe and fittings shall be carefully inspected before installation in the trench. All rocks and unsuitable bearing material shall be made in strict accordance with the manufacturer's recommendations.
 - Compression Joints: The bell end shall be dry and shall have the proper compression ring installed without lubricant and in the proper position. The spigot end shall be clean and lubricated with the recommended lubricant. The spigot end shall then be pushed home as indicated when the manufacturer's reference mark is flush with the end of the bell. The completed joint will then be carefully laid in the trench.
 - Solvent welded joints shall be made only on clean, dry, square cut, smooth pipe sections. The fitting shall be dry/ tested for proper size before solvent is applied. The assembly shall proceed in strict accordance with recommended procedures furnished by the manufacturer.
 - Pipe trench depths shall be as follows:

Main lines - 12" - 18"

Laterals - 7" - 12"
 - Gate Valves 2-1/2" or less in size shall be as specified on the plans.
 - Vacuum Breakers shall be as required by local codes.
 - Automatic solenoid control valves shall be as specified on the plans. The valve shall have a slow closing feature, and manual bleed with pet cock for manual operation installed. All valves shall have a manual flow control adjustment.
 - All automatic control valves shall be installed as shown on the detail for such valves and per manufacturer's specification. Once installed and wired to the controller, the Contractor shall adjust the flow controller on each valve to provide the proper flow rate and pressure on the downstream side of each valve. The control valve for multi-sprinkler head sections shall be adjusted to provide approximately 30 p.s.i. dynamic pressure downstream with all heads operating. The solenoid control valve for rotary spray head sections shall be adjusted to provide approximately 30 p.s.i. dynamic pressure downstream with all heads operating.
- SPRINKLER HEADS:**
 - All sprinkler heads shall be furnished, installed, and operated in accordance with the plans and these Specifications. Installation shall comply with details set out herein. The Contractor shall guarantee all sprinklers and components for not less than one (1) year from installation warranting against all defects in normal material or workmanship.
 - The Contractor shall be responsible for the exact location of all sprinkler heads, acknowledging that the plans are schematic in nature. The Contractor shall accordingly place all sprinkler heads, adjust all nozzles, spray patterns and make whatever other adjustments that may be required to give the landscaped areas full, complete and proper coverage and distributions. The Contractor shall make all such adjustments and additions solely at his expense.
 - Pop-up Spray heads shall be as shown on the plans. Nozzle shall automatically rise 4" for operation, and shall self-retract. Construction shall be entirely of non-corroding materials, and shall be suitable for operations.
 - Controllers shall be contained in lockable cabinets and located on structures as directed by Architect.
 - Control wiring shall be as specified by controller manufacturer. The wiring shall be installed in accordance with these plans and the manufacturer's recommendations.
 - All controllers shall include a provision for system override by automatic moisture sensing devices.
 - All valve programming shall exactly follow the valve sequence as indicated on the plans. No deviation shall be made without the Landscape Architect's approval. Initial station tuning shall be in accordance with the Landscape Architect's instructions.
- OTHER IRRIGATION EQUIPMENT:**
 - The Contractor shall furnish and install all other irrigation equipment called for herein and on the plans in complete accordance with these specifications and details shown on the plans.
 - Valves, including remote control valves, manual control valves, gate valves, globe valves and pressure reducing valves shall be installed in a valve access box.
 - At the end of the test period, the piping system shall be "blown-off" at the point most distant from the test pump.
 - The acceptance of a piping section because of its passing pressure and leakage tests in no way relieves the Contractor of his responsibility for the piping. At any time during the construction or the warranty period, the Landscape Architect or Owner may order subsequent tests. Such tests and any repairs required shall be solely at the expense of the Contractor.
 - As an exception to the above testing requirements, all constant pressure main lines upstream from automatic control valves including pump station shall be pressure tested at 125 p.s.i. and shall be allowed leakage as follows:

Allowable Leakage = $L = \frac{NDPI^2}{2}$

Where: L= Gallons per hour

N= Number of joints in test main

D= Pipe diameter (nominal)

P= Average test pressure
 - Periodic inspections shall be scheduled by the Contractor as the work progresses. At such time the Landscape Architect shall inspect all work for complete conformance with these specifications. The Landscape Architect shall make any additional inspections that he may deem necessary.
 - Generally, inspections should be requested by the Contractor whenever any subsurface system is complete and ready for backfill, so that the Engineer may inspect completely that system without causing excavation of the system, which would be solely the expense of the Contractor.
 - Periodic inspections shall include the examination of sprinkler location placement and the conformance of such placement to the actual in-place landscaping requirements. Any relocation required will be ordered by the Landscape Architect and carried out by the Contractor at no additional costs.
- AS-BUILT DRAWINGS:**
 - During the course of irrigation installation, Contractor shall prepare a reproducible set of as-built drawings for the entire system.
 - Said drawings shall be kept updated to show the accurate locations of all underground piping, valves, etc. that have been installed.
 - Upon completion of construction, the Contractor shall furnish the completed original drawings and one set of prints to the Owner, and one set of prints to the Landscape Architect.
- WARRANTY PERIOD:**
 - The entire irrigation system shall be fully guaranteed for parts and labor by the irrigation contractor for a period of one year following final acceptance by the owner or Landscape Architect. This warranty shall be extended to cover individual irrigation components which have longer manufacturer's warranties.



Landscape Architecture | Land Planning | Environmental Consulting | Artist | Permitting | Project Management | Irrigation Design

323 Tenth Avenue West, Suite 102
Palmetto, Florida 34221

Ph. 941.981.3089 | Cell. 941.713.0782
email: bob@gausedassociates.com

LC26000572 | ISA# FL5334A | AICP #061988

DESIGNED: RG/AB
DATE: Aug. 2019
DRAWN: RG/AB
JOB NO.: 18-1104
SCALE: 1" = 40'

REVISIONS:

1	INCLUDE WESTERN PORTION 2020.06.12
2	FINALIZE PLAN 2021.08.19
3	
4	
5	
6	
7	

Sheraton Palmetto
at Bradenton Area Convention Center

LOCATED AT:
600 US Hwy. 41, North
Palmetto, FL 34221
SECTION 13/24
TOWNSHIP 34 SOUTH
RANGE 17 EAST
MANATEE COUNTY, FLORIDA

IRRIGATION PLAN

IR.2

